



STEP 1 – PRIOR TO INSTALLATION

- A) Husky®** only approves installing the flares according to these written instructions with the hardware provided. **WARNING:** Failure to install according to these instructions will invalidate the warranty. This includes, but is not limited to using alternative installation methods, hardware, or materials. **DO NOT USE:** Loctite, SuperGlue, or similar products on the hardware or the flares.
- B) Fit:** Verify the fit of the flares to vehicle. (Some filing, sanding, or cutting may be necessary to ensure proper fit).
- C) Painting:** (Optional) if paint is desired it must be done prior to installing flares on vehicle. Clean outer surface with a good grade degreaser. **DO NOT USE LACQUER THINNER OR ENAMEL REDUCER AS A DEGREASER.** Wipe outer surface thoroughly with a tack rag prior to paint. Application of plastic adhesion promoter for ABS plastic as per your paint system manufacturer's recommendations is required. Paint flares using a high quality enamel, or polyurethane automotive paint. If painting edge trim (not recommended), use a flex additive.
- D) Performance:** Using larger Tires may increase the area required to turn the vehicle. Some Tire/Rim combinations may require lowering bump stops and or installing steering stops to prevent tire from contacting flare.
- E) Exhaust System:** Modifications may be necessary to maintain a minimum 4" clearance between flares and exhaust pipes. (Exhaust gases should not vent directly onto flares)
- F) Metal Protection:** All exposed fasteners and bare metal should be treated with rust resistant paint **BEFORE** installing flares. Spray inner fender wells with undercoating **AFTER** flare attachments have been completed.
- G) Decals:** Flares may interfere with existing decals on vehicle. If you wish, remove decals prior to installation of flares.
- H) Care & Cleaning:** Husky fender flares are built to last; any detergent you use to wash your vehicle is sufficient to clean the flare. Do not use any harsh abrasive detergents.

Toyota Extend-A-Fender® Fender Flares Set of 4

Set Part #2803916
Rev-4 10/27/2022

TOOLS FOR EASY INSTALLATION:

- Socket Wrench
- 10mm Socket
- #2 Phillips Screwdriver
- Grease Pencil
- Awl (Optional)

PLEASE READ: Dirt and debris can become lodged between the fender flares and the vehicle's fenders, causing scratching and paint wear from vibration. Husky Liners is not responsible for any damage, and the installation of our fender flares is done with the buyer's understanding that this scratching and paint wear may occur.

LIMITED LIFETIME WARRANTY AGAINST ANY MANUFACTURING DEFECTS

- To claim a warranty, you must provide Proof of Purchase.



The material that your product is made from can be recycled. Please also consider recycling the packaging that your product came in.



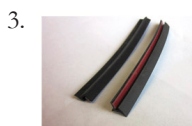
Included in Hardware Kit:



SW1-0036,
M6-.3 x 20mm Hex
Magni Black Screw,
16 pcs



CL1-0005,
Dacromet "S"
Spring Clip,
6 pcs



GP1-0025,
EX4008 Wiper
Style Edge Trim,
325 inches



SW1-0050,
10 x 5/16 Phillips
Truss Screw,
6 pcs



MT1-0002,
1" x 1" x .017"
Black Tab,
6 pcs



ET1-0002,
Edge Trim Tool,
1 pc

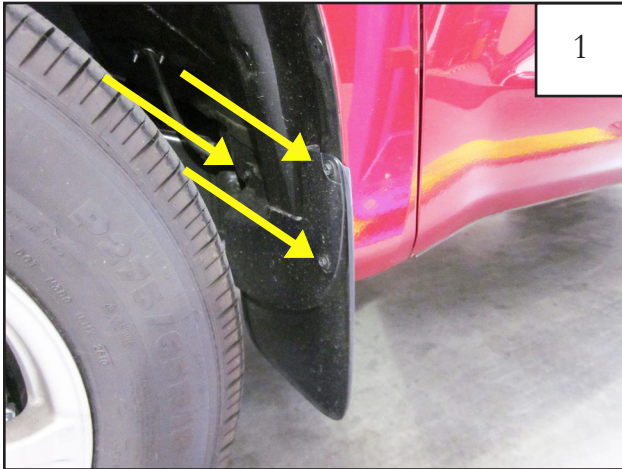
STEP 2 - EDGE TRIM INSTALLATION

A. Peel two to three inches of red vinyl backing away from Edge Trim (GP1-0025) tape. Applying the adhesive side of the edge trim to the inner side of the flare, affix the edge trim to the top edge of the flare (the portion that comes in contact with the vehicle).

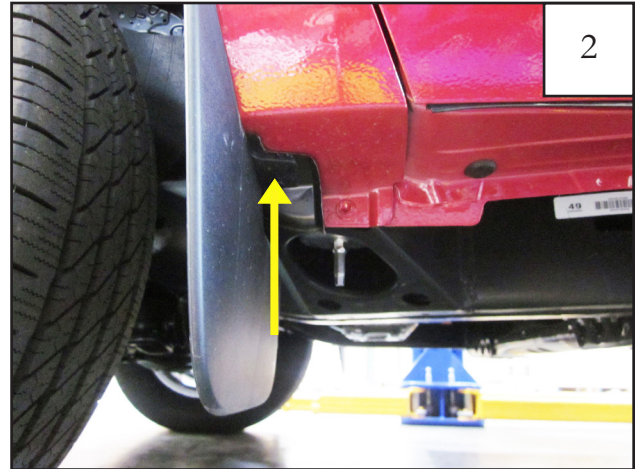
B. Press edge trim into place along the top edge of the flare in one-foot increments, pulling red vinyl backing free as you continue to work your way around the top edge of the flare.



Front Flare Installation Procedures (Driver's Side)



Remove three hex bolts from factory mud flap, using a 10mm socket.



Remove one hex bolt from underside of mud flap using a 10mm socket. Discard mud flap



Start supplied Screw (SW1-0036) through top rear hole in flare and into factory hole in rear of wheel well. *Do not tighten.*



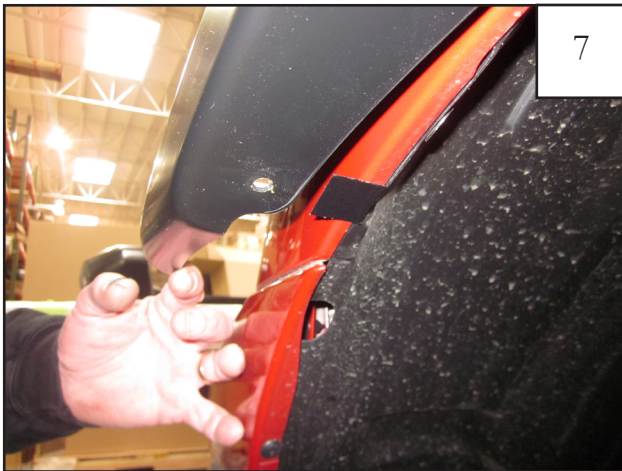
Screw (SW1-0036) location.



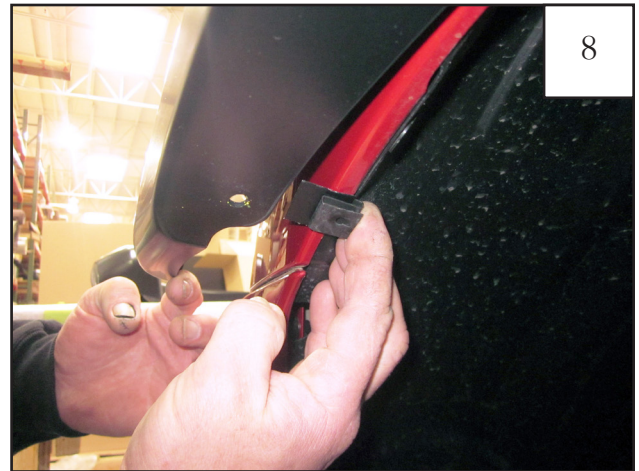
5
Hold front of the flare firmly on the fender. Mark three Clip (CL1-0005) locations using the holes in the flare as a guide.



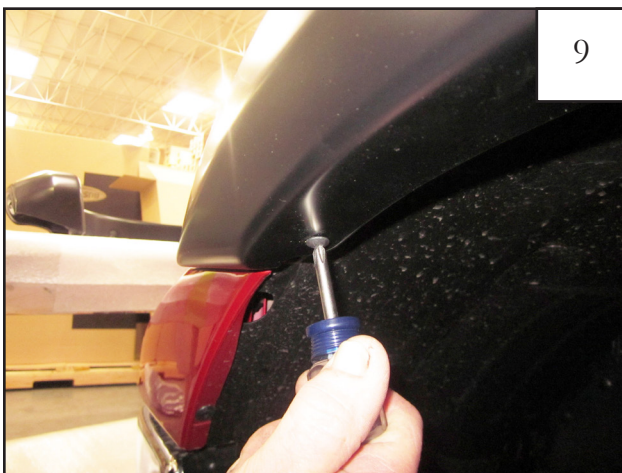
6
Three marked Clip (CL1-0005) locations.



7
Pull flare outward to access the fender lip (with Screw [SW1-0036] still installed). Center a Tab (MT1-0002) over each mark made in Step 8.



8
Slide a Clip (CL1-0005) over each Tab (MT1-0002).



9
Align holes in flare with holes in Clips (CL1-0005). Start a supplied Screw (SW1-0050) through holes in flare and into each Clip (CL1-0005) installed in Step 11 in the order shown in Step 13. *If necessary, use an awl to locate holes in clips.*



10
Start Screw (SW1-0050) in location #1 first, then move to #2, and start in location #3 last. **DO NOT TIGHTEN.**



11
Start Screw (SW1-0036) through the one lower rear hole in flare and into factory hole in lower rear of wheel well.



12
Screw (SW1-0036) lower rear wheel well location.



13
Ensure flare is properly positioned and tighten all screws.

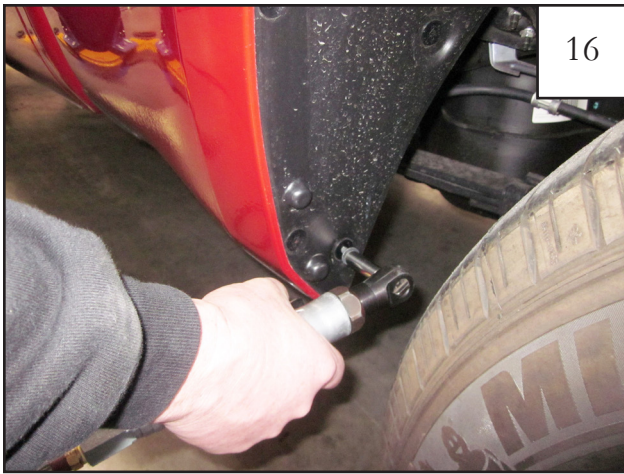
Rear Flare Installation Procedures (Driver's Side):



14
Remove five hex bolts from factory mud flap using a 10mm socket.

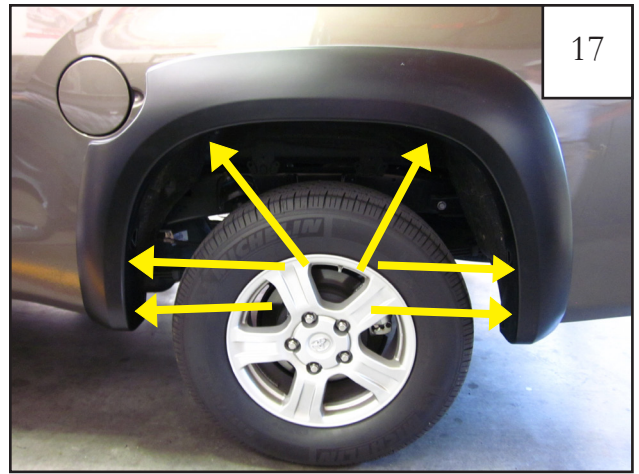


15
Remove one hex bolt from underside of mud flap using a 10mm socket. Discard mud flap.



16

Using a socket wrench with a 10mm socket, remove lower screw from front of rear wheel well as shown.



17

Hold flare firmly on the fender. Start a supplied Screw (SW1-0036) through each hole in flare and into hole in fender. (6 locations)



18

Ensure flare is properly positioned and tighten all screws.

Edge Trim Tool Procedures:



19

Using supplied Edge Trim Tool (ET1-0001), seat edge trim against vehicle by hooking curved end under edge trim at one end of flare. Next, slide around outer edge of flare to the other end.



20

Using flat end of supplied Edge Trim Tool (ET1-0001), seat edge trim against flare by inserting straight end between edge trim and flare at one end. Next, slide around entire edge to the other end.